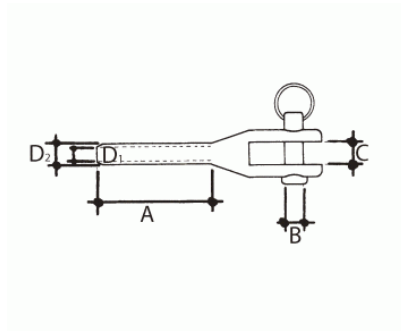
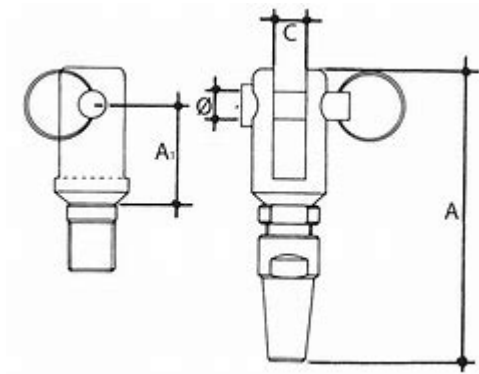


## Terminal amb forquilla en acer inoxidable AISI-316



### Informació tècnica

| Dimensiones  |      |      |     |    |    |       |
|--------------|------|------|-----|----|----|-------|
| Medida Cable | Ø1   | Ø2   | A   | B  | C  | Peso  |
| 3            | 3.2  | 6.3  | 40  | 5  | 6  | 0.03  |
| 4            | 4.2  | 7.5  | 50  | 6  | 8  | 0.048 |
| 5            | 5.2  | 9.1  | 60  | 8  | 10 | 0.084 |
| 6            | 6.2  | 12.5 | 70  | 9  | 12 | 0.179 |
| 7            | 7.2  | 14.3 | 80  | 9  | 12 | 0.178 |
| 8            | 8.2  | 16.1 | 100 | 9  | 12 | 0.21  |
| 10           | 10.5 | 17.8 | 110 | 10 | 14 | 0.33  |
| 12           | 12.5 | 21.4 | 140 | 11 | 16 | 0.4   |