

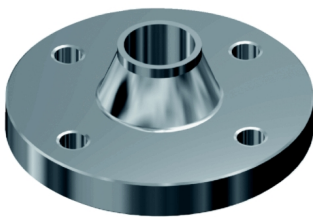
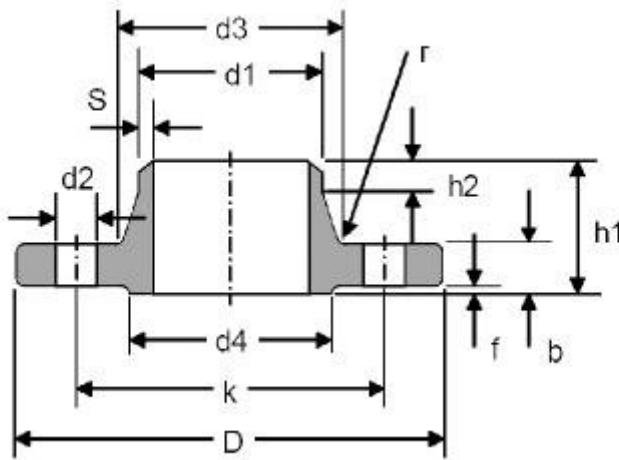
Flange DIN-2633 PN-16

Features: ISO Pipe DIN-2632 Flange PN-10 En 1092-1-01 PN 10 DIN-2634 Flange PN-25 En 1092-1-01 PN 25 DIN-2633 Flange PN-16 En 1092-1-01 PN 16 Flange DIN-2635 PN-40 En 1092-1-01 PN 40 Flange DIN-2631 PN-6 En 1092-1-01 PN 6

Quality: AISI-304L Stainless Steel AISI-316L Stainless Steel.

Installation: The conical neck provides beneficial reinforcement under conditions of lateral stress caused by the expansions and contractions of a pipe line. The pipe flange joint is as strong as a butt weld joint between two pipes.

Applications: They are mainly used to build pipes or tubes, conductors of fluids (gases, liquids, pulps and solids in powder state). It is recommended for use at high pressure, low or high temperature, high load and the transport of flammable or high-cost liquids where leaks must be kept to a minimum.



Technical information

DN	Tubo	Brida											Tornillo		Peso
	ISO	d5	D	b	k	h1	d3	s	r	h2	d4	f	Cantidad	d2	Kg/u
10	17.2	17.70	90	14	60	35	28	1.8	4	6	40	2	4	14	0.58
15	21.3	22.00	95	14	65	35	32	2.0	4	6	45	2	4	14	0.65
20	26,9	27.60	105	16	75	38	40	2.3	4	6	58	2	4	14	0.95
25	33,7	34.40	115	16	85	38	45	2.6	4	6	68	2	4	14	1.14
32	42,4	43.10	140	16	100	40	56	2.6	6	6	78	2	4	18	1.65

40	48,3	49.00	150	16	110	42	64	2.6	6	7	88	3	4	18	1.83
50	60,3	61.10	165	18	125	45	75	2.9	6	8	102	3	4	18	2.48
65	76,1	77.10	185	18	145	45	90	2.9	6	10	122	3	4	18	3.03
80	88,9	90.30	200	20	160	50	105	3.2	8	10	138	3	8	18	3.82
100	114,3	115.90	220	20	180	52	131	3.6	8	12	158	3	8	18	4.41
125	139,7	141.60	250	22	210	55	156	4.0	8	12	188	3	8	18	6.07
150	168,3	170.50	285	22	240	55	184	4.5	10	12	212	3	8	22	7.40
200	219,1	221.80	340	24	295	62	235	5.9	10	16	268	3	12	22	10.85
250	273,0	276.20	405	26	355	70	292	6.3	12	16	320	3	12	26	15.87
300	323,9	327.60	460	28	410	78	344	7.1	12	16	378	4	12	26	21.24
350	355,6	372.20	520	30	470	82	390	8.0	12	16	438	4	16	26	28.95
400	406,4	423.70	580	32	525	85	445	8.0	12	16	490	4	16	30	36.30
500	508	513.60	715	34	650	90	548	8.0	12	16	610	4	20	33	59.63
600	600	616.50	840	36	770	95	652	8.8	12	18	725	5	20	36	82.54
700	700	716.00	910	36	840	100	755	8.8	12	18	795	5	24	36	83.90
800	800	818.00	1025	38	950	105	855	10.0	12	20	900	5	24	39	107.30
900	900	920.00	1125	40	1050	110	955	10.0	12	20	1000	5	28	39	124.97
1000	1000	1022.00	1255	42	1170	120	1058	10.0	16	22	1115	5	28	42	163.76