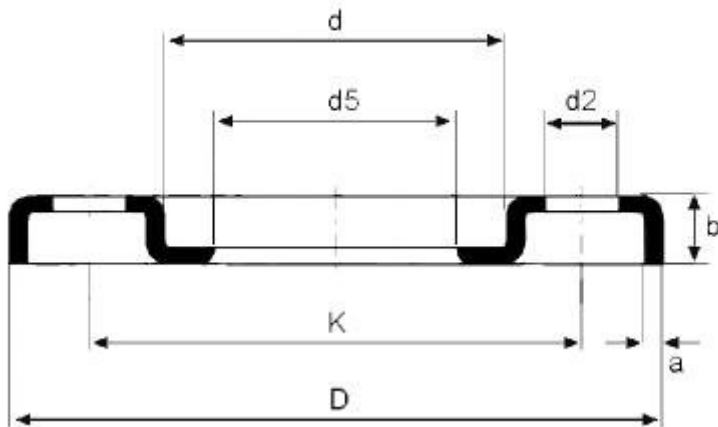


## Pressed Flange DIN-2642 PN-10-16-40

**Features:** ISO/DIN Millimeter Tube Flange DIN-2642 PN-10-16-40 En 1092-1-02 PN 6 Stainless Steel AISI-304L  
Stainless Steel AISI-316L Cadmium Steel

**Applications:** They are mainly used to build pipes or tubes, conductors of fluids (gases, liquids, pulps and solids in powder state).



### Technical information

DN	Tubo		Brida					Tornillo		Peso kg/u	
	ISO	DIN	d6	D	b	k	e	Cantidad	d2	Acero	Aluminio
10		14	16	90	14	60	3	4	14	0.61	
10	17.2		19	90	14	60	3	4	14	0.60	
15		18	22	95	14	65	3	4	14	0.67	0.18
15	21.3		24	95	14	65	3	4	14	0.66	0.18
20		23	28	105	14	75	3	4	14	0.82	0.23
20	26,9		30	105	14	75	3	4	14	0.81	0.23
25		28	33	115	16	85	4	4	14	1.12	0.28
25	33,7		36	115	16	85	4	4	14	1.10	0.28

32		38	42	140	16	100	4	4	18	1.63	0.4
32	42,4		46	140	16	100	4	4	18	1.60	0.4
40		43	50	150	16	110	4	4	18	1.85	0.62
40	48,3		54	150	16	110	4	4	18	1.80	0.62
50		53	62	165	16	125	5	4	18	2.18	0.78
50	60,3		65	165	16	125	5	4	18	2.14	0.78
65		73	81	185	16	145	5	4	18	2.60	0.94
65	76,1		81	185	16	145	5	4	18	2.60	0.94
80		84	94	200	18	160	5	8	18	3.17	1.27
80	88,9		94	200	18	160	5	8	18	3.17	1.27
100		104	113	220	18	180	5	8	18	3.67	1.67
100	114,3		119	220	18	180	5	8	18	3.51	1.67
125		129	138	250	18	210	5	8	18	4.53	2.03
125	139,7		145	250	18	210	5	8	18	4.32	2.03
150		154	164	285	18	240	5	8	22	5.60	3.18
150	168,3		173	285	18	240	5	8	22	5.26	3.18
200		204	225	340	20	295	5	8	22	7.53	4.53
200	219,1		225	340	20	295	5	8	22	7.53	4.53
250		254	273	395	22	350	5	12	22	10.27	5.08
250	273,0		279	395	22	350	5	12	22	9.82	5.08
300		304	329	445	26	400	5	12	22	13.46	6.14
300	323,9		329	445	26	400	5	12	22	13.46	6.14
350		354	362	505	28	460	6	16	22	20.07	
350	355,6		374	505	28	460	6	16	22	18.54	
400		406	413	565	32	515	6	16	26	27.19	
400	406,4		426	565	32	515	6	16	26	25.04	
500		506	517	670	38	620	6	20	26	39.38	
500	508		517	670	38	620	6	20	26	39.38	
600	610		618	780	44	725	7	20	30	56.55	
700	711		721	895	50	840	7	24	30	80.02	
800	813		824	1015	56	950	7	24	33	112.25	
900	914		926	1115	62	1050	7	28	33	135.80	
1000	1016		1026	1230	70	1160	7	28	36	182.96	