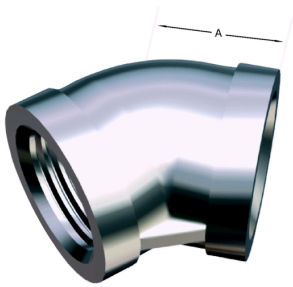


45° Elbow, Threaded, Female-Female (Fig. 120)

Thread Type: Components are threaded in sizes compatible with ISO 7/1.

Finish: Matte

Quality: Manufactured in bars, tubes or a microfusion of AISI-316 stainless steel.



Technical information

Ø Nominal en pulgadas	Dimensiones Mate		Peso kgs
	D	A	
1/4"	13.5	19	0.04
3/8"	17.2	21	0.076
1/2"	21.3	22	0.114
3/4"	26.9	25	0.171
1"	33.7	38	0.249
1 1/4"	42.4	33	0.404
1 1/2"	48.3	36	0.27
2"	60.3	43	0.86
2 1/2"	76.1	50	1.59
3"	88.9	-	-
4"	114.3	-	-