

Manometer with Glycerin-filled Pressure Gauge (Art. 824)

MANOMETER Ø 100 WITH GLYCERINE

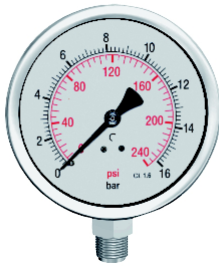
Construction: AISI-304 stainless steel

Features: Bourdon tube and stainless steel fitting

1/2" male gas thread

Graduation available 0-2.5-4-6-10-16-25-60-100 bar

Radial bottom outlet



Technical information

Bar	Peso
0-2,5	0.61
0-4	0.61
0-6	0.61
0-10	0.61
0-16	0.61
0-25	0.61
0-40	0.61
0-60	0.61
0-100	0.61