

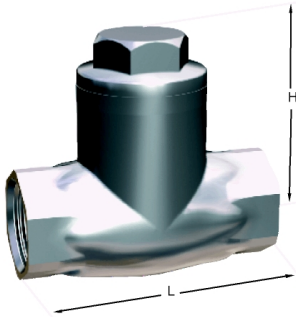
## Check Valve with Oscillating Flap (Art. 430)

### Characteristics:

CHECK VALVE WITH SWING CLIPPER PN - 16

CONSTRUCTION: STAINLESS STEEL. CF8M (316) MICROFUSION GASKETS: PTFE CONNECTION: DIN 259 GAS THREAD

MAX. PRESSURE: 14 Kgs/cm<sup>2</sup> AT 120°C 10 Kgs/cm<sup>2</sup> AT 180°C MINIMUM TEMPERATURE: -30°C



### Technical information

Medida	L	H	Peso
1/2"	65	44	0.312
3/4"	80	53	0.49
1"	90	58	0.7
1 1/4"	105	62	1.04
1 1/2"	120	73	1.55
2"	141	78	2.39