

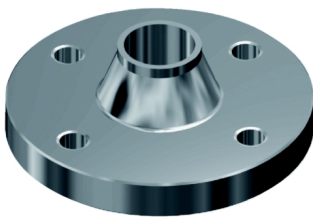
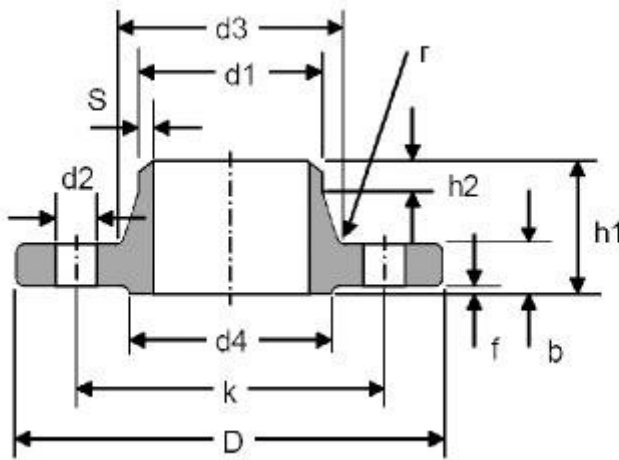
## Flange DIN-2631 PN-6

**Features:** ISO Pipe DIN-2632 Flange PN-10 En 1092-1-01 PN 10 DIN-2634 Flange PN-25 En 1092-1-01 PN 25 DIN-2633 Flange PN-16 En 1092-1-01 PN 16 Flange DIN-2635 PN-40 En 1092-1-01 PN 40 Flange DIN-2631 PN-6 En 1092-1-01 PN 6

**Quality:** AISI-304L Stainless Steel AISI-316L Stainless Steel.

**Installation:** The conical neck provides beneficial reinforcement under conditions of lateral stress caused by the expansions and contractions of a pipe line. The pipe flange joint is as strong as a butt weld joint between two pipes.

**Applications:** They are mainly used to build pipes or tubes, conductors of fluids (gases, liquids, pulps and solids in powder state). It is recommended for use at high pressure, low or high temperature, high load and the transport of flammable or high-cost liquids where leaks must be kept to a minimum.



### Technical information

DN	Tubo	Brida											Tornillo	
	ISO	d5	D	b	k	h1	d3	s	r	h2	d4	f	Cantidad	d2
10	17.2	17.70	75	12	50	28	26	1.8	4	6	35	2	4	11
15	21.3	22.00	80	12	55	30	30	2	4	6	40	2	4	11
20	26,9	27.60	90	14	65	32	38	2.3	4	6	50	2	4	11
25	33,7	34.40	100	14	75	35	42	2.6	4	6	60	2	4	11
32	42,4	43.10	120	14	90	35	55	2.6	6	6	70	2	4	14

40	48,3	49.00	130	14	100	38	62	2.6	6	7	80	3	4	14
50	60,3	61.10	140	14	110	38	74	2.9	6	8	90	3	4	14
65	76,1	77.10	160	14	130	38	88	2.9	6	9	110	3	4	14
80	88,9	90.30	190	16	150	42	102	3.2	8	10	128	3	4	18
100	114,3	115.90	210	16	170	45	130	3.6	8	10	148	3	4	18
125	139,7	141.60	240	18	200	48	155	4	8	10	178	3	8	18
150	168,3	170.50	265	18	225	48	184	4.5	10	12	202	3	8	18
200	219,1	221.80	320	20	280	55	236	5.9	10	15	258	3	8	18
250	273,0	276.20	375	22	335	60	290	6.3	12	15	312	3	12	18
300	323,9	327.60	440	22	395	62	342	7.1	12	15	365	4	12	22
350	355,6	372.20	490	22	445	62	385	7.1	12	15	415	4	12	22
400	406,4	423.70	540	22	495	65	438	7.1	12	15	465	4	16	22
500	508	513.60	645	24	600	68	538	7.1	12	15	570	4	20	22
600	600	616.50	755	24	705	70	640	7.1	12	16	670	5	20	26
700	700	716.00	860	24	810	70	740	7.1	12	16	775	5	24	26
800	800	818.00	975	24	920	70	842	7.1	12	16	880	5	24	30
900	900	920.00	1075	26	1020	70	942	7.1	12	16	980	5	24	30
1000	1000	1022.00	1175	26	1120	70	1045	7.1	16	16	1080	5	28	30