

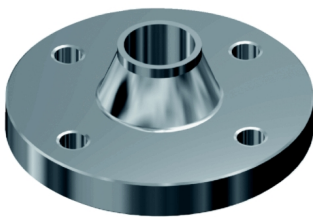
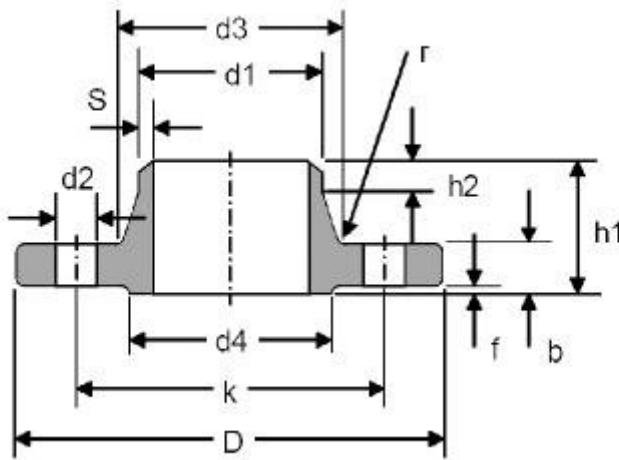
## Flange DIN-2632 PN-10

**Features:** ISO Pipe DIN-2632 Flange PN-10 En 1092-1-01 PN 10 DIN-2634 Flange PN-25 En 1092-1-01 PN 25 DIN-2633 Flange PN-16 En 1092-1-01 PN 16 Flange DIN-2635 PN-40 En 1092-1-01 PN 40 Flange DIN-2631 PN-6 En 1092-1-01 PN 6

**Quality:** AISI-304L Stainless Steel AISI-316L Stainless Steel.

**Installation:** The conical neck provides beneficial reinforcement under conditions of lateral stress caused by the expansions and contractions of a pipe line. The pipe flange joint is as strong as a butt weld joint between two pipes.

**Applications:** They are mainly used to build pipes or tubes, conductors of fluids (gases, liquids, pulps and solids in powder state). It is recommended for use at high pressure, low or high temperature, high load and the transport of flammable or high-cost liquids where leaks must be kept to a minimum.



### Technical information

DN	Tubo	Brida											Tornillo		Peso
	ISO	d5	D	b	k	h1	d3	s	r	h2	d4	f	Cantidad	d2	Kg/u
10	17.2	17.70	90	14	60	35	28	1.8	4	6	40	2	4	14	0.58
15	21.3	22.00	95	14	65	35	32	2.0	4	6	45	2	4	14	0.65
20	26,9	27.60	105	16	75	38	40	2.3	4	6	58	2	4	14	0.95
25	33,7	34.40	115	16	85	38	45	2.6	4	6	68	2	4	14	1.14
32	42,4	43.10	140	16	100	40	56	2.6	6	6	78	2	4	18	1.65

40	48,3	49.00	150	16	110	42	64	2.6	6	7	88	3	4	18	1.83
50	60,3	61.10	165	18	125	45	75	2.9	6	8	102	3	4	18	2.48
65	76,1	77.10	185	18	145	45	90	2.9	6	10	122	3	4	18	3.03
80	88,9	90.30	200	20	160	50	105	3.2	8	10	138	3	8	18	3.82
100	114,3	115.90	220	20	180	52	131	3.6	8	12	158	3	8	18	4.41
125	139,7	141.60	250	22	210	55	156	4.0	8	12	188	3	8	18	6.07
150	168,3	170.50	285	22	240	55	184	4.5	10	12	212	3	8	22	7.40
200	219,1	221.80	340	24	295	62	235	5.9	10	16	268	3	8	22	11.10
250	273,0	276.20	395	26	350	68	292	6.3	12	16	320	3	12	22	14.92
300	323,9	327.60	445	26	400	68	344	7.1	12	16	370	4	12	22	17.47
350	355,6	372.20	505	26	460	68	385	7.1	12	16	430	4	16	22	21.71
400	406,4	423.70	565	26	515	72	440	7.1	12	16	482	4	16	26	26.27
500	508	513.60	670	28	620	75	542	7.1	12	16	585	4	20	26	38.27
600	600	616.50	780	28	725	80	642	7.1	12	18	685	5	20	30	46.56
700	700	716.00	895	30	840	80	745	8.0	12	18	800	5	24	30	62.30
800	800	818.00	1015	32	950	90	850	8.0	12	18	905	5	24	33	83.81
900	900	920.00	1115	34	1050	95	950	10.0	12	20	1005	5	28	33	102.46
1000	1000	1022.00	1230	34	1160	95	1052	10.0	16	20	1110	5	28	36	118.53