

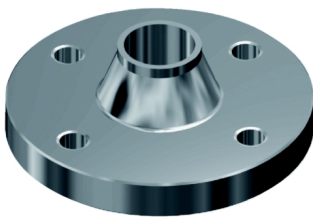
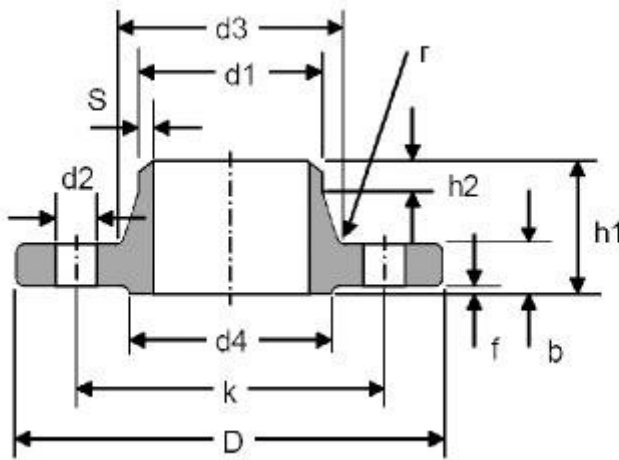
Flange DIN-2634 PN-25

Features: ISO Pipe DIN-2632 Flange PN-10 En 1092-1-01 PN 10 DIN-2634 Flange PN-25 En 1092-1-01 PN 25 DIN-2633 Flange PN-16 En 1092-1-01 PN 16 Flange DIN-2635 PN-40 En 1092-1-01 PN 40 Flange DIN-2631 PN-6 En 1092-1-01 PN 6

Quality: AISI-304L Stainless Steel AISI-316L Stainless Steel.

Installation: The conical neck provides beneficial reinforcement under conditions of lateral stress caused by the expansions and contractions of a pipe line. The pipe flange joint is as strong as a butt weld joint between two pipes.

Applications: They are mainly used to build pipes or tubes, conductors of fluids (gases, liquids, pulps and solids in powder state). It is recommended for use at high pressure, low or high temperature, high load and the transport of flammable or high-cost liquids where leaks must be kept to a minimum.



Technical information

DN	Tubo	Brida											Tornillo		Peso
	ISO	d5	D	b	k	h1	d3	s	r	h2	d4	f	Cantidad	d2	Kg/u
10	17.2	17.70	90	16	60	35	28	1.8	4	6	40	2	4	14	0.66
15	21.3	22.00	95	16	65	38	32	2.0	4	6	45	2	4	14	0.75
20	26,9	27.60	105	18	75	40	40	2.3	4	6	58	2	4	14	1.07
25	33,7	34.40	115	18	85	40	46	2.6	4	6	68	2	4	14	1.28
32	42,4	43.10	140	18	100	42	56	2.6	6	6	78	2	4	18	1.86

40	48,3	49.00	150	18	110	45	64	2.6	6	7	88	3	4	18	2.08
50	60,3	61.10	165	20	125	48	75	2.9	6	8	102	3	4	18	2.78
65	76,1	77.10	185	22	145	52	90	2.9	6	10	122	3	8	18	3.61
80	88,9	90.30	200	24	160	58	105	3.2	8	12	138	3	8	18	4.62
100	114,3	115.90	235	24	190	65	134	3.6	8	12	162	3	8	22	6.27
125	139,7	141.60	270	26	220	68	162	4.0	8	12	188	3	8	26	8.61
150	168,3	170.50	300	28	250	75	192	4.5	10	12	218	3	8	26	11.29
200	219,1	221.80	360	30	310	80	244	6.3	10	16	278	3	12	26	16.61
250	273,0	276.20	425	32	370	88	298	7.1	12	18	335	3	12	30	23.48
300	323,9	327.60	485	34	430	92	352	8.0	12	18	395	4	16	30	30.74
350	355,6	372.20	555	38	490	100	398	8.0	12	20	450	4	16	33	44.22
400	406,4	423.70	620	40	550	110	452	8.8	12	20	505	4	16	36	57.88
500	508	513.60	730	44	660	125	558	10.0	12	20	615	4	20	36	89.57
600	600	616.50	845	46	770	125	660	11.0	12	20	720	5	20	39	114.96
700	700	716.00	960	46	875	125	760	12.5	12	20	820	5	24	42	139.50
800	800	818.00	1085	50	990	135	865	14.2	12	22	930	5	24	48	188.71
900	900	920.00	1185	54	1090	145	968	16.0	12	24	1030	5	28	48	231.48
1000	1000	1022.00	1320	58	1210	155	1070	17.5	16	24	1140	5	28	56	303.52