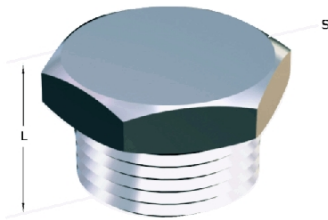


Hexagon Plug, Threaded Exterior (Fig. 290)

Thread Type: Components are threaded with a size compatible with ISO7/1.

Finish: Polished and matte.

Quality: Manufactured in bar, tube or in a microfusion of AISI-316 stainless steel.



Technical information

Ø		Pulida		Mate		
Nominal Pulgadas	D	L	S Exago	L	S Exago	Peso kgs
1/8"						
1/4"	13.5	18	17	19	16	0.023
3/8"	17.2	19	20	19	19	0.028
1/2"	21.3	21	24	22	23	0.037
3/4"	26.9	23	30	23	28	0.059
1"	33.7	26	35	28	36	0.098
1 1/4"	42.4	29	44	33	46	0.159
1 1/2"	48.3	33	48	35	50	0.201
2"	60.3	37	61	39	65	0.344
2 1/2"	76.1	42	78	46	80	0.873
3"	88.9	43	90	48	92	1.083
4"	114.3	-	-	-	-	-