

## Connector core with radio ST 309

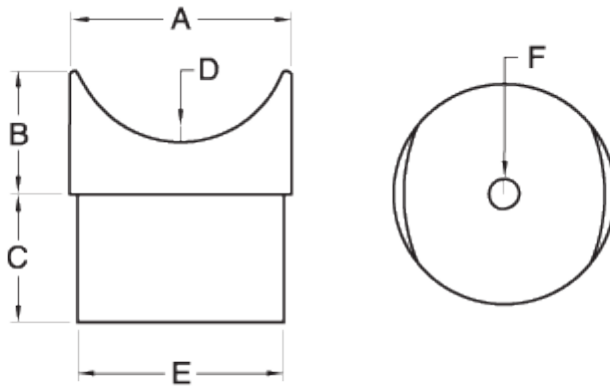
### CONNECTOR CORE with RADIO

**Material:** Cast stainless steel.

**Quality:** AISI 316.

**Finish:** Gloss (see satin finish).

**Description:** Connector sleeve with radius to adjust end tubes.



### Technical information

Código	Descripción	A	B	C	E	F
180118FST3091	SOPORTE TUBO ST-309 38,1.38,1 INOX. A-304	38.1	25	25	35.1	7
1803184ST3094320	SOPORTE TUBO 316 ST-309 43x20 BA	43	30	25	40	7
1803184ST3094343	SOPORTE TUBO 316 ST-309 43/43	43	30	25	40	7

1803184ST3095020	SOPORTE TUBO 316 ST-309 50,8/20	50.8	35	25	47.8	7
1803184ST3095038	SOPORTE TUBO 316 ST-309 50,8/38,1 BA	50.8	35	25	47.8	7
1803184ST3095050	SOPORTE TUBO 316 ST-309 50,8/50,8	50.8	35	25	47.8	7