

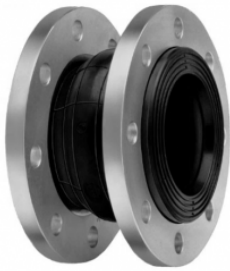
Junta de dilatación de goma única tipo bobina (art. 831)

Características:

SIMPLE ONDA CUERPO EPDM BRIDAS DIN PN-10 ZINCADAS

PRESION DE TRABAJO MAX.: 15 Kgs/cm²

TEMP. MAX. -10°C +115°C DN P



Información técnica

| Medida | P | L | D | D1 | Peso |
|--------|-----|-----|-----|-----|-------|
| 1 1/4" | 40 | 95 | 140 | 69 | 3.1 |
| 1 1/2" | 40 | 95 | 150 | 69 | 3.8 |
| 2" | 52 | 105 | 165 | 86 | 4.25 |
| 2 1/2" | 68 | 115 | 185 | 106 | 5.8 |
| 3" | 76 | 130 | 200 | 116 | 6 |
| 4" | 103 | 135 | 220 | 150 | 6.75 |
| 5" | 128 | 170 | 250 | 180 | 9.5 |
| 6" | 152 | 180 | 285 | 209 | 12.85 |
| 8" | 194 | 205 | 340 | 260 | 16.85 |
| 10" | 250 | 240 | 395 | 320 | 23.7 |
| 12" | 300 | 260 | 445 | 367 | 29.65 |
| 14" | 320 | 255 | 505 | 408 | 39.7 |
| 16" | 372 | 255 | 565 | 472 | 51.3 |
| 18" | 415 | 255 | 615 | 522 | 72.4 |
| 20" | 454 | 255 | 670 | 570 | 88.65 |